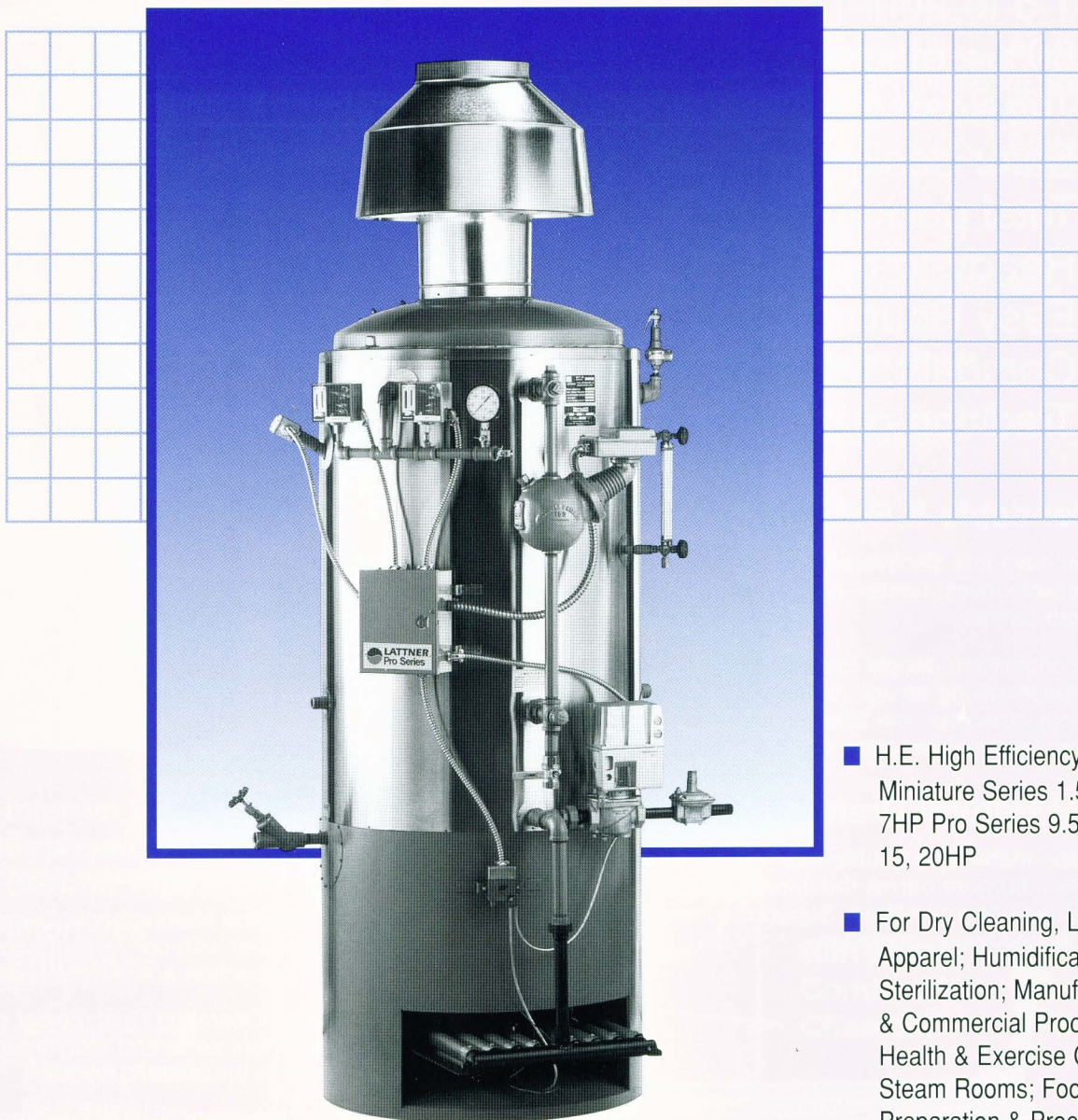


The most-effective tubeless boiler in the world

LATTNER

Boiler Systems



- H.E. High Efficiency Model:
Miniature Series 1.5, 3, 5,
7HP Pro Series 9.5, 10,
15, 20HP
- For Dry Cleaning, Laundry,
Apparel; Humidification,
Sterilization; Manufacturing
& Commercial Processes;
Health & Exercise Clubs,
Steam Rooms; Food
Preparation & Processing

LATTNER

Steam...Safe, Sure, Simple



Lattner Vertical

NOW— Get more steam for your money; greater reserve capacity for peak periods

- 1.5 to 20HP
- 80%+ efficiency
- Tubeless design
- Safer design
- Total package units
- Ready-to-connect
- Easy Routine Maintenance
- Compact; less floor space
- Tradition of quality since 1918

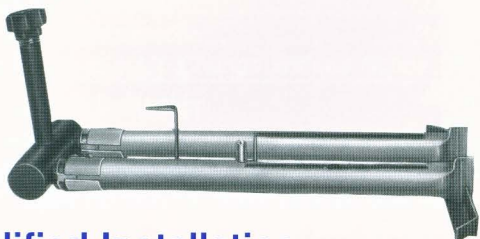
Dependable & Reliable

You have just discovered one of the world's most efficient and reliable investments—the vertical, tubeless style of boilers from Lattner.

Its origins are deeply rooted in Lattner's tradition of quality. This space-saving design conserves floor space; 80%+ high efficiency cuts your fuel bills. Engineered to last longer; it requires less maintenance and it always performs - QUIETLY.

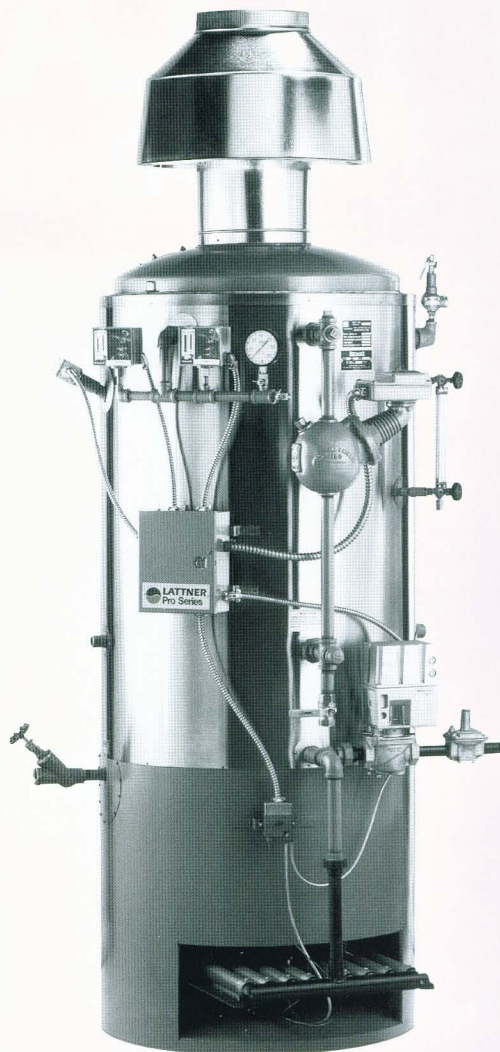
Quiet Natural Draft Gas Burners

Dependable and trouble-free to prevent costly down-time. Precision burners permit the introduction of secondary air to both sides of flame ribbon. Superior combustion. Exceptionally quiet operation.



Simplified Installation

No engineering is required on-the-job. Installation can be performed by local heating firms for top efficiency. You are in business quicker with Lattner.



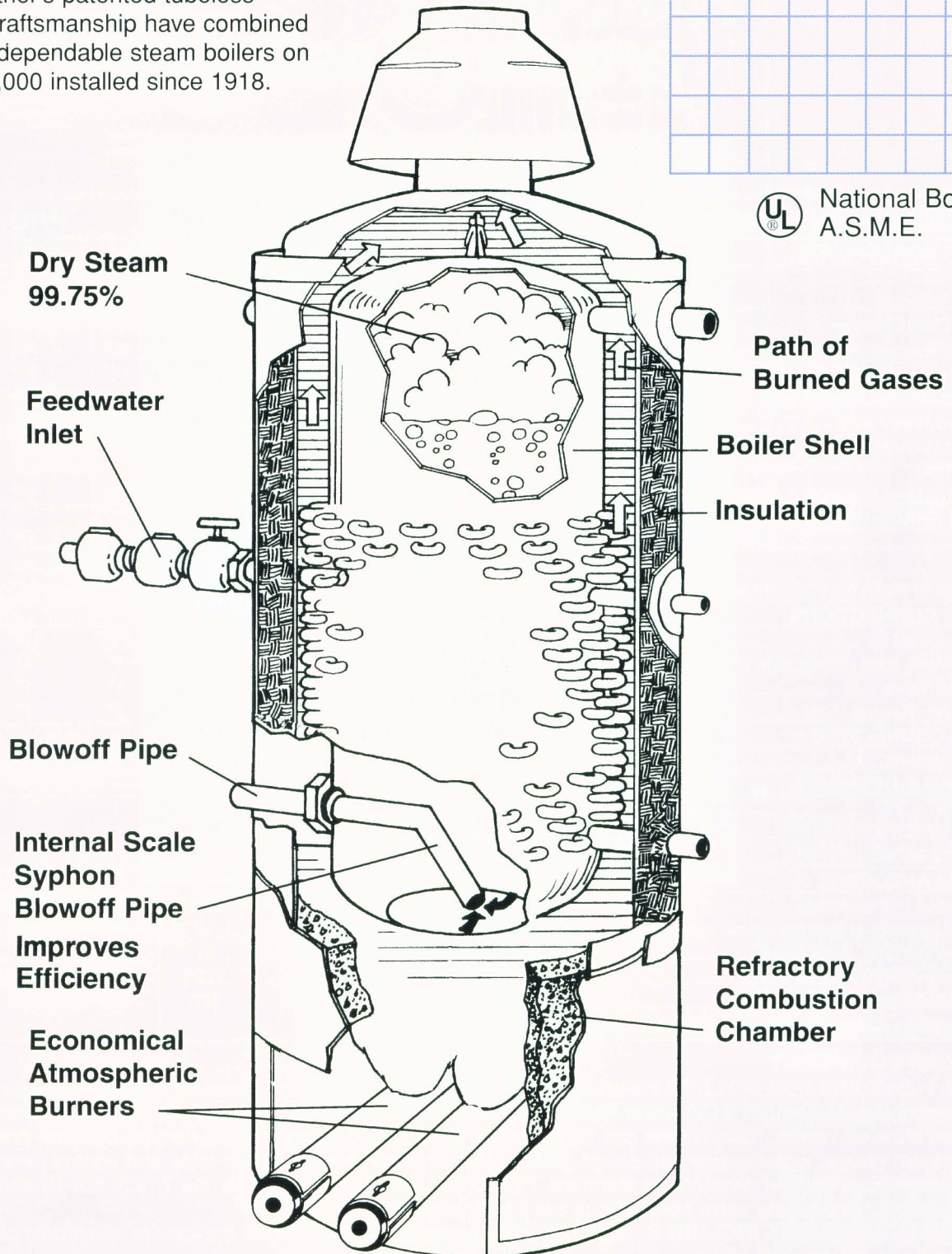
User Benefits

- Tubeless Design: No tubes or coils to plug up or burn out. Eliminates costly down-time.
- Easy Routine Maintenance: Owner maintenance is made easier with convenient hand-hole openings for visual inspection and simple clean out.
- Reduces Operating Cost: Lower gas bills, fewer replacement parts and easy maintenance put real savings in the owner's pocket.
- Takes Less Floor Space: Designed to fit through a standard 6'8" door opening, the boiler takes a minimum of floor space.
- Safety Features: Two low water cut-offs provide extra protection, alarm capability. Flame safeguard verifies pilot, flame operation. Three manual alarm resets.

Tubeless Boilers

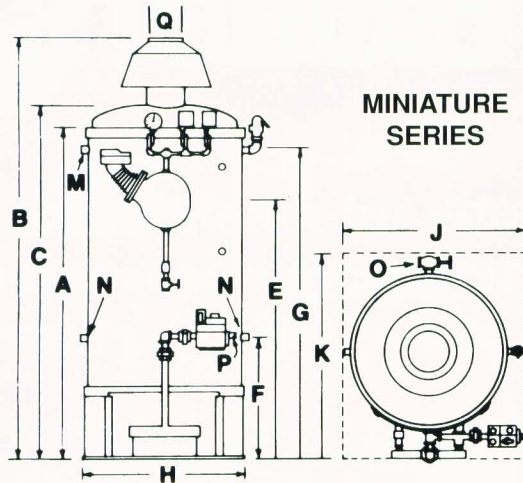
Look inside at proven design:

Over the years, Lattner's patented tubeless designs and Iowa craftsmanship have combined to deliver the most dependable steam boilers on the planet. Over 40,000 installed since 1918.

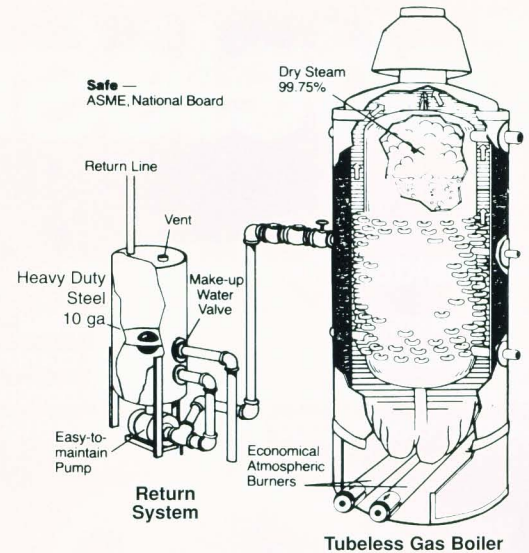


National Board
A.S.M.E.

HIGH EFFICIENCY H.E MODEL



**MINIATURE
SERIES**



Tubeless Gas Boiler

Specifications: Model H.E.

	MINIATURE SERIES				PRO SERIES			
BOILER HORSEPOWER	1½	3	5	7	9.5	10	15	20
HEIGHTS								
Boiler Stripped.....A	42"	46"	53"	59"	76"	72"	78"	78"
Top of Draft Diverter ①B	58"	61"	68"	81½"	99½"	94½"	105"	106"
Top of FluecapC	46"	48"	55"	63½"	80"	75"	82"	83"
To C/L of Horizontal Diverter StackD	—	—	—	69"	86"	81"	89"	91"
Floor to Normal Water Level. (Pump Off).....E	28"	25"	34"	48"	60"	53½"	59½"	62"
To Feed Water InletF	15¾"	14"	30½"	37"	47"	40"	40"	49"
To Steam Outlet ②G	35¾"	35½"	46¼"	55½"	72"	66"	71½"	70"
DIAMETER								
Stripped. Less Controls & FittingsH	19"	23½"	23½"	30"	26"	33"	33"	41"
FLOOR SPACE (With Controls)								
WidthJ	24"	30"	30"	33"	35"	37"	37"	49"
DepthK	32"	39"	39"	43"	39"	46"	46"	54"
Addition to width for Horizontal Diverter.....	—	—	—	21"	25"	25"	25"	26"
BOILER CONNECTIONS								
Steam Outlet ②M	1"	1¼"	1¼"	1¼"	1¼"	1¼"	1½"	2"
Feed Water Inlet (Either side of Boiler)N	1"	1"	1"	1"	1"	1"	1"	1"
Blow-off ValveO	¾"	1"	1"	1"	1"	1"	1"	1"
Gas Inlet, Natural GasP	¾"	¾"	¾"	1"	1"	1"	1"	1¼"
STACK CONNECTION								
Vent DiameterQ	5"	6"	6"	8"	10"	10"	12"	12"
HANDHOLE OPENINGS								
Size 2¾" x 3¾"Quan.		1	1		1			
Size 2½" X 3¾"Quan.	1							
Size 3" x 4"Quan.				1		2	2	3
MISCELLANEOUS								
BTU input in thousands.....	80	160	255	325	398	525	680	970
Water Capacity at Normal Level, approx.....Gal.	5.5	9.3	14	32	34	61	73	112
Heating Surface, Total ASMESq. Ft.	11.3	16.6	18.2	31	52.7	57	67	123
Shipping Weight Approx.....Lbs.	425	560	635	1225	1600	1800	1900	2700
A.S.M.E. Design PressureP.S.I.	100	100	100	150	150	150	150	150

Specifications Subject to Change Without Notice

REGULAR EQUIPMENT

MODEL H.E. TUBELESS BOILERS include as STANDARD TRIM: operating pressure control, manual reset high limit pressure control, McDonnell #150 water level control and low water cut-off, auxiliary low water cut-off manual reset probe type, two blow-off valves, main burner gas valve, safety pilot, lanced-port.atmospheric-type burners, pressure relief safety valve, steam gauge, water gauge set, gauge glass protector, draft diverter, pump relay and control panel 115V/1/60.

① All boilers have vertical diverters as standard. Horizontal diverter is optional for the 7, 9.5, 10, 15 and 20 H.P. sizes.

② Steam outlet and safety valve connections are interchangeable.

OPTIONAL EQUIPMENT INCLUDES: night operating pressure switch, LP gas equipment, electronic pilots, time clocks, etc., can be found on price sheet.



Lattner Boiler Manufacturing Co.

Lattner Boiler Mfg. Co.
1411 9th St. S.W. Box 1527
Cedar Rapids, IA 52406
800-345-1527 • 319-366-0778 • FAX 319-366-0770
http://www.lattner.com • e-mail: info@lattner.com