

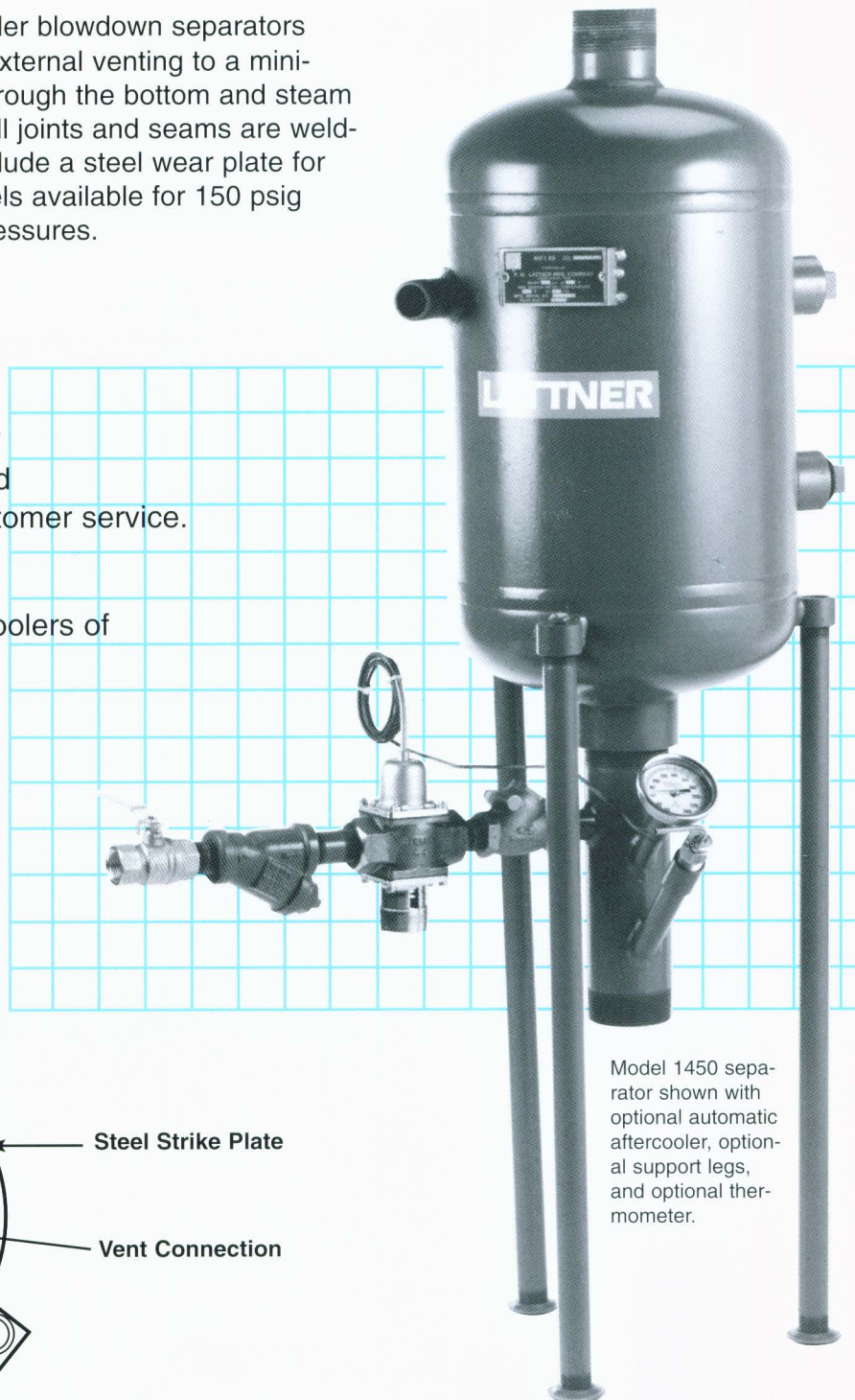
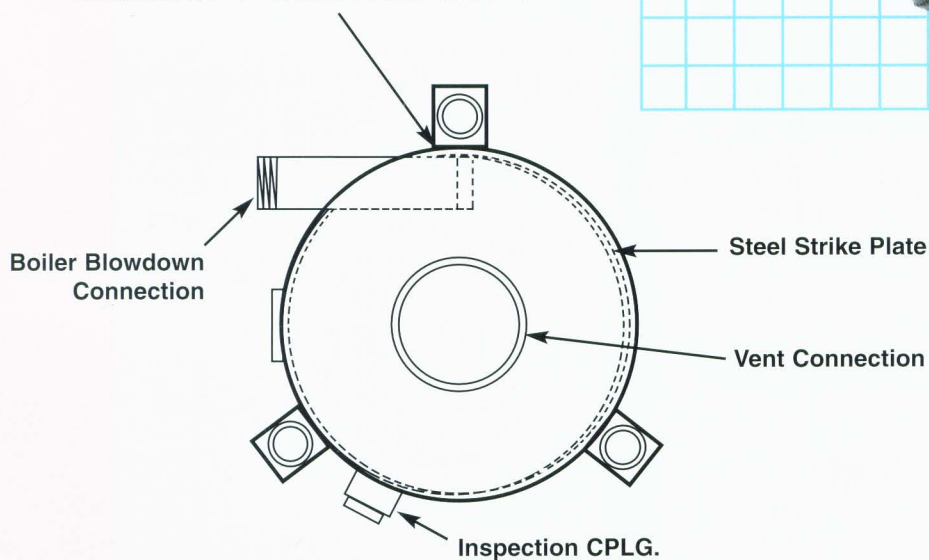
LATTNER

Packaged Boiler Blowdown Separators

HEAVY-DUTY, ASME CODE steam boiler blowdown separators safely reduce boiler effluent pressure for external venting to a minimum of 5 psi". Boiler effluent is drained through the bottom and steam is vented out the top to the atmosphere. All joints and seams are welded and hydrostatically tested. Internals include a steel wear plate for long lasting durability. Four standard models available for 150 psig with options available for higher design pressures.

- UM Stamped per ASME Code
- 150 psig @ 550° F.
- Integral internal inspection openings.
- Standard One Year Warranty, backed by over 80 years of responsible customer service.
- Optional legs for floor mounting
- Optional manual or automatic aftercoolers of blowdown effluent.

Minimum 3/8" Pressure Vessel Code Material

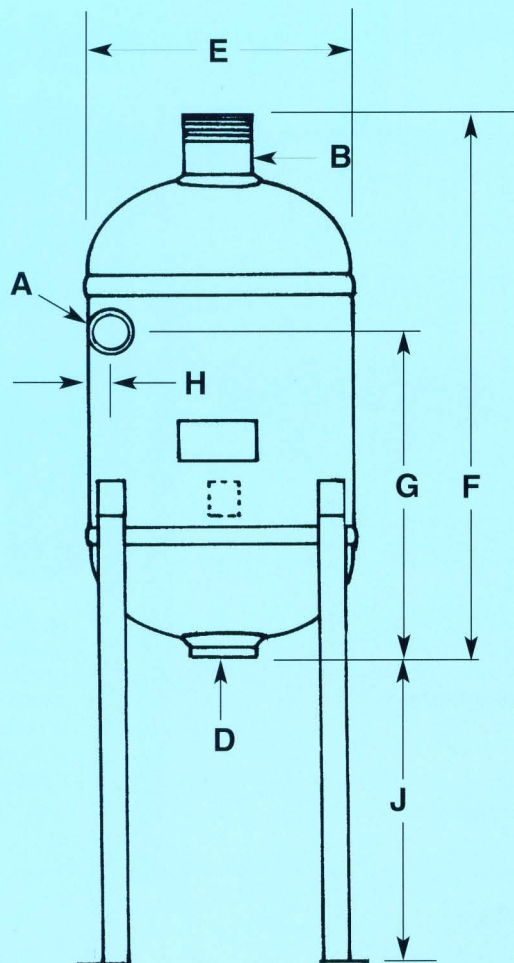


Model 1450 separator shown with optional automatic aftercooler, optional support legs, and optional thermometer.

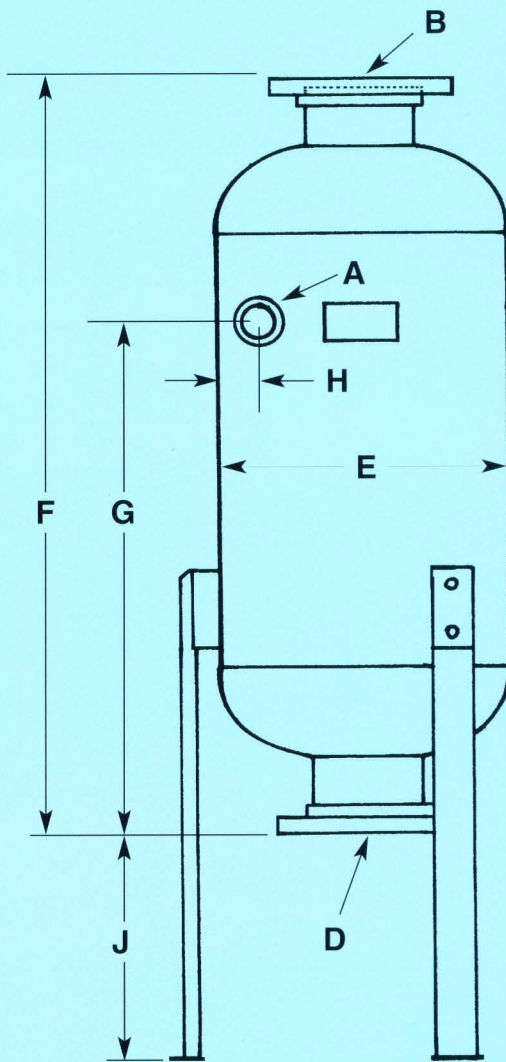
Packaged Boiler Blowdown Separators

Separator selection is based upon the boiler's bottom blow down connection as noted on the selection chart below. Approximate installation dimensions [denoted in inches] are as shown.

Model#	A Inlet	B Vent	D Drain	E Dia.	F Oa Ht.	G	H	J Opt. Legs	Ship Wt. Lb.
810	1"	2"	2"	8 ⁵ / ₈ "	17 ³ / ₈ "	8 ³ / ₁₆ "	1 ¹ / ₄ "	16"	47
1450	1 ¹ / ₂ "	3"	3"	14"	29 ¹ / ₁₆ "	18 ³ / ₈ "	1 ⁵ / ₈ "	24"	155
1600	2"	6" Flg	5" Flg	16"	44 ³ / ₄ "	30 ⁵ / ₈ "	1 ⁷ / ₈ "	26"	310
1800	2 ¹ / ₂ "	6" Flg	6" Flg	18"	46"	31 ¹ / ₄ "	2 ¹ / ₈ "	25"	350



Models 810/1450



Models 1600/1800

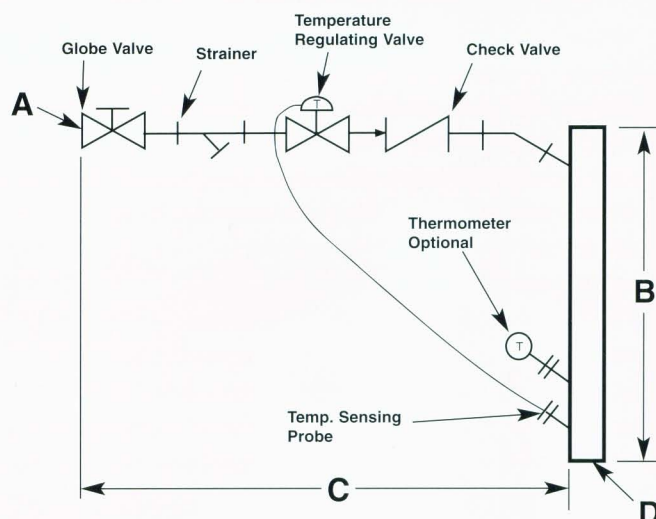
Boiler Blowdown Accessories

Boiler Effluent Cooling

Relative to local codes and EPA standards, boiler effluent may not exceed a nominal 140 ° F before entry into the building drain. To cool the effluent, your Separator can be equipped with an automatic or manual method of water-cooling from the following tables.

Automatic Aftercooler

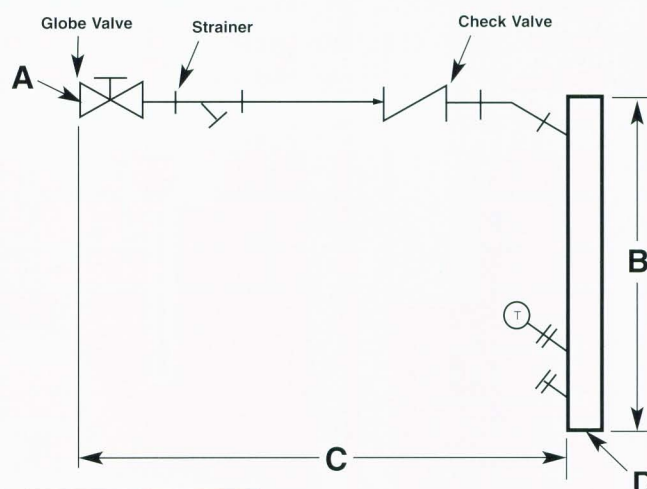
Selection is based upon the Separator's drain connection as noted on the selection chart below. Approximate installation dimensions [denoted in inches] are as shown. Each assembly is factory piped and includes a ball valve, check valve, strainer, and automatic temperature regulating valve. An optional temperature gauge can be included.



Model#	Fits Separator Model	A Cooling Water Inlet	B Height	C Length	D Drain
205A	810	1/2"	12"	22"	2"
301A	1450	1"	12"	25"	3"
525A	1600	1 1/4"	24"	25 1/2"	5" Flg.
625A	1800	1 1/4"	24"	25 7/8"	6" Flg.

Manual Aftercooler

Selection is based upon the Separator's drain connection as noted in the selection chart below. Approximate installation dimensions [denoted in inches] are as shown. Each assembly is factory piped and includes a ball valve, check valve, and strainer. An optional discharge temperature gauge can be included.



Model#	Fits Separator Model	A Cooling Water Inlet	B Height	C Length	D Drain
205M	810	1/2"	12"	19"	2"
301M	1450	1"	12"	20"	3"
525M	1600	1 1/4"	24"	20"	5" Flg.
625M	1800	1 1/4"	24"	20"	6" Flg.

Boiler Blowdown Accessories

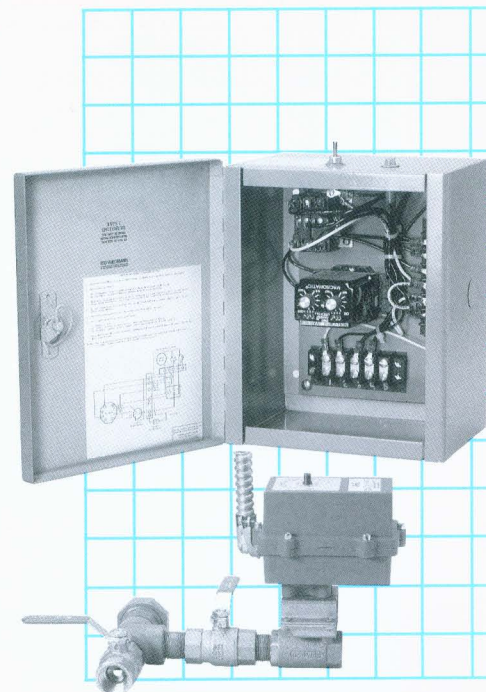
Boiler Blowdown

Boiler blow down is *mandatory*. A boiler cannot continue operating for very long without expelling the left behind solids as steam is generated. Periodic blow down must take place. This can be accomplished with the addition of an automatic blowdown assembly. A boiler that is blown down regularly will maintain high efficiency and last longer. (The use of an automatic device should not preclude periodic visual examination of the boiler blow down effluent to examine that the automatic assembly is working as intended.)

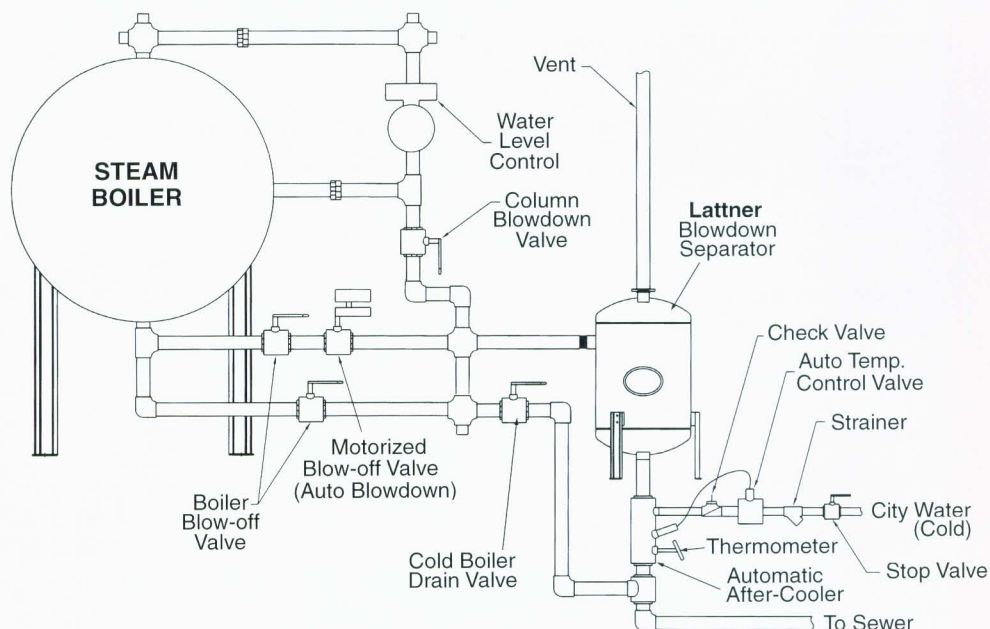
Automatic Bottom Blowdown

Selection is based upon the boiler's drain connection as noted on the selection chart below. Each assembly is factory piped and wired, and includes a ball shutoff valve, ball by-pass valve, motor driven ball valve, and a NEMA 1 panel containing the interval timer.

Model#	Boiler Blowdown or Drain conn.
1674-B- $\frac{3}{4}$ "	Up to $\frac{3}{4}$ "
1674-B-1"	Up to 1"
1674-B-1 $\frac{1}{4}$ "	Up to 1 $\frac{1}{4}$ "
1674-B-1 $\frac{1}{2}$ "	Up to 1 $\frac{3}{4}$ "



Typical Lattner Blowdown System with Auto Bottom Blowdown, Separator, and Automatic Aftercooler.
(Field piped by installer)



Lattner Boiler Manufacturing Co

1411 9th Street SW, P.O. Box 1527
Cedar Rapids, Iowa 52406, U.S.A.
319-366-0778 • 800-345-1527
FAX 319-366-0770
e-mail: info@lattner.com
www.lattner.com