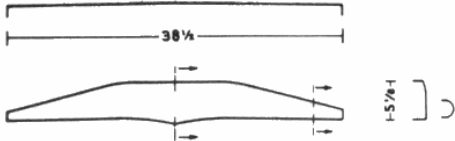
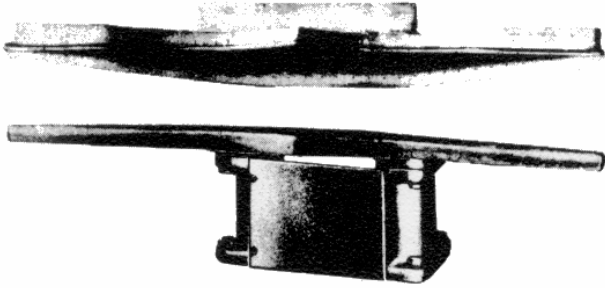


# Refurbished Lapel Presses



— Buck dimensions padded —

## O-47

VACUUM. . . HEAD AND BUCK ARE STEAM HEATED. . . SPRAY STEAM APPLIED FROM HEAD ONLY. . . FINGER TIP HEAD- STEAM CONTROL.

THIS MODEL HAS BEEN DESIGNED FOR OFF-PRESSING THE LAPELS OF SACK COATS, IN ONE OPERATION, GIVING THE PROPER SHAPE AND ROLL EFFECT. THE HEAD AND BUCK ARE DESIGNED TO PRESS THE RIGHT AND LEFT LOWER PORTION OF THE COLLAR AND LAPEL THUS PREVENTING DISTORTION AND ELIMINATING A SECOND OPERATION. THIS MODEL IS AVAILABLE FOR EITHER FOOT OR AIR OPERATION.

### SPECIFICATIONS

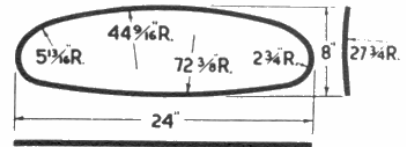
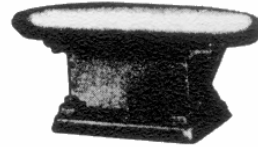
Height of machine from floor to top of buck, inches	40
Space between buck and backboard, inches	12
Table, and work area, inches	30 x 50
Clearance between buck and head at front, inches	15
Clearance between buck and head at back, inches	9
Shipping weight, pounds, approx.	930
Floor space, inches	50 x 48

## D0-24

THE DO-24 LAPEL PRESS IS DESIGNED FOR PRESSING LAPELS OF SACK COATS, TOPCOATS AND OVERCOATS. IT IS ESPECIALLY USEFUL IN ELIMINATING BULGES AND RETOUCHING EDGES.

### SPECIFICATIONS

Clearance under buck, inches	3 3/4
Height of machine from floor to top of buck, inches	40 1/2
Space between buck and backboard, inches	10 3/4
Firm solid table, inches	30 x 50
Clearance between buck and head at front, inches	14
Clearance between buck and head at back, inches	8 3/4
Floor space, inches	50 x 50



Buck dimensions padded  
**24 x 8**

VACUUM. . . HEAD AND BUCK ARE STEAM HEATED. . . STEAM APPLIED FROM HEAD ONLY. . . HAND VALVE HEAD-STEAM CONTROL. . . IF SPECIFICALLY ORDERED, DUAL HEAD-STEAM CONTROL, HAND OR FOOT, WILL BE SUPPLIED AT EXTRA COST

Head is same size as padded buck

Seickel & Sons Inc. is not affiliated with Hoffman/New Yorker Inc. and does not rely on Hoffman/New Yorker Inc. for its replacement parts.

## SEICKEL & SONS INC.

REBUILDERS AND DISTRIBUTORS OF STEAM PRESSING EQUIPMENT

360 ELIZABETH AVE., NEWARK, NJ 07112 TEL 973-242-1948 FAX 973-733-4956

TOLL FREE IN U.S. 1-800-338-5044

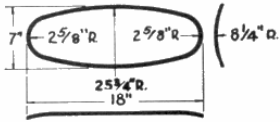
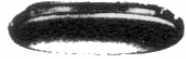
WEB [WWW.SEICKEL.COM](http://WWW.SEICKEL.COM)

[SALES@SEICKEL.COM](mailto:SALES@SEICKEL.COM)

# Refurbished Lapel Presses

## 0-25

THE O-25 LAPEL PRESS IS DESIGNED FOR PRESSING LAPELS OF WOMEN'S AND CHILDREN'S COATS. THIS MACHINE IS NOT ADAPTABLE FOR LOUNGS MODEL MEN'S COATS.



Buck dimensions padded  
18 x 7

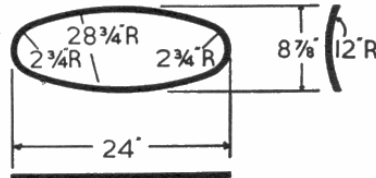
Head is same size as padded buck

## 0-29

THE O-29 IS DESIGNED FOR PRESSING LAPELS OF SACK COATS, TOPCOATS AND OVERCOATS. THE SAME MACHINE IS USED FOR BOTH RIGHT AND LEFT LAPELS. IT IS ALSO USEFUL FOR GENERAL TOUCH-UP.

### Specifications

Clearance under buck, inches	9 $\frac{7}{8}$
Height of machine from floor to top of buck, inches	40 $\frac{1}{2}$
Space between buck and backboard, inches	10 $\frac{15}{16}$
Firm solid table, inches	30 x 36
Clearance between buck and head at front, inches	14 $\frac{3}{8}$
Clearance between buck and head at back, inches	8 $\frac{3}{8}$
Weight with boiler, pounds, approx.	1245
Weight without boiler, pounds, approx.	970
Floor space, inches	36 x 50
A.S.M.E. boiler	10 x 32



Buck dimensions padded

24 x 8 $\frac{7}{8}$

Head is same size as padded buck

Seickel & Sons Inc. is not affiliated with Hoffman/New Yorker Inc. and does not rely on Hoffman/New Yorker Inc. for its replacement parts.

## SEICKEL & SONS INC.

REBUILDERS AND DISTRIBUTORS OF STEAM PRESSING EQUIPMENT

360 ELIZABETH AVE., NEWARK, NJ 07112 TEL 973-242-1948 FAX 973-733-4956

TOLL FREE IN U.S. 1-800-338-5044

WEB [WWW.SEICKEL.COM](http://WWW.SEICKEL.COM)

[SALES@SEICKEL.COM](mailto:SALES@SEICKEL.COM)