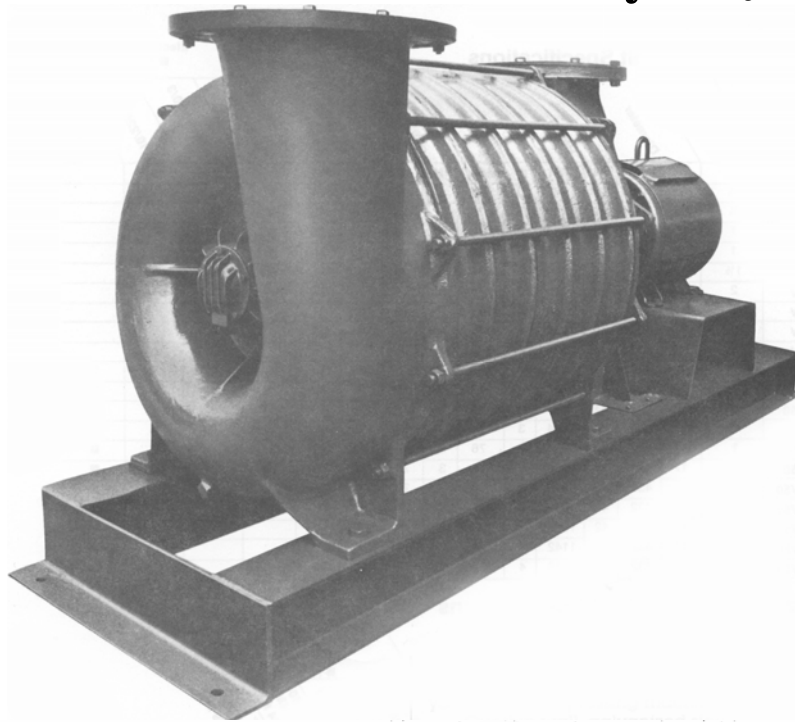


# Powerful Horizontal Vacuum Dryers (from 2-200hp)



## Horizontal Vacuum Unit Specifications

| Model     | Horsepower | Inlet Diameter |     | Outlet Diameter |     | Shipping Weight |      | Condensate Tanks                 |                                  |                                  |                                  |
|-----------|------------|----------------|-----|-----------------|-----|-----------------|------|----------------------------------|----------------------------------|----------------------------------|----------------------------------|
|           |            | IN             | MM  | IN              | MM  | LB              | KG   | 18" x 60"<br>457 MM x<br>1524 MM | 24" x 60"<br>610 MM x<br>1524 MM | 30" x 60"<br>762 MM x<br>1524 MM | 36" x 72"<br>914 MM x<br>1829 MM |
| RT-32H    | 2          | 3              | 76  | 3               | 76  | 400             | 182  | ■                                |                                  |                                  |                                  |
| RT-33H    | 3          | 3              | 76  | 3               | 76  | 500             | 227  | ■                                |                                  |                                  |                                  |
| RT-35H    | 5          | 3              | 76  | 3               | 76  | 600             | 273  | ■                                |                                  |                                  |                                  |
| RT-57H    | 7½         | 5              | 127 | 5               | 127 | 900             | 409  |                                  | ■                                |                                  |                                  |
| RT-510H   | 10         | 5              | 127 | 5               | 127 | 1100            | 500  |                                  | ■                                |                                  |                                  |
| RT-615H   | 15         | 6              | 152 | 5               | 127 | 1400            | 636  |                                  | ■                                | ■                                |                                  |
| RT-620H   | 20         | 6              | 152 | 5               | 127 | 1600            | 727  |                                  | ■                                | ■                                |                                  |
| RT-625H   | 25         | 6              | 152 | 5               | 127 | 1700            | 765  |                                  | ■                                | ■                                |                                  |
| RT-630H   | 30         | 6              | 152 | 5               | 127 | 1800            | 818  |                                  | ■                                | ■                                |                                  |
| RT-640H   | 40         | 6              | 152 | 6               | 152 | 2000            | 909  |                                  |                                  | ■                                |                                  |
| RT-650H   | 50         | 6              | 152 | 6               | 152 | 2300            | 1046 |                                  |                                  | ■                                | ■                                |
| RT-860H   | 60         | 8              | 203 | 8               | 203 | 3000            | 1364 |                                  |                                  |                                  | ■                                |
| RT-875H   | 75         | 8              | 203 | 8               | 203 | 3300            | 1500 |                                  |                                  |                                  | ■                                |
| RT-8100H  | 100        | 8              | 203 | 8               | 203 | 3900            | 1773 |                                  |                                  |                                  | ■                                |
| RT-12125H | 125        | 12             | 305 | 12              | 305 | 4800            | 2182 |                                  |                                  |                                  | ■                                |
| RT-12150H | 150        | 12             | 305 | 12              | 305 | 5400            | 2455 |                                  |                                  |                                  | ■                                |
| RT-12200H | 200        | 12             | 305 | 12              | 305 | 6000            | 2728 |                                  |                                  |                                  |                                  |

**Electrical Specifications:**  
 All 60 Hertz Units 230/480/60/3  
 All 50 Hertz Units 220/380/50/3  
 Note: Add 50 to Model Number for  
 50 Hertz units, e.g., Model RT-510H50 is  
 the 50 Hertz version of RT-510H.

Seickel & Sons Inc. is not affiliated with Hoffman/New Yorker Inc. and does not rely on Hoffman/New Yorker Inc. for its replacement parts.

## SEICKEL & SONS INC.

REBUILDERS AND DISTRIBUTORS OF STEAM PRESSING EQUIPMENT

360 ELIZABETH AVE., NEWARK, NJ 07112 TEL 973-242-1948 FAX 973-733-4956

TOLL FREE IN U.S. 1-800-338-5044

WEB [WWW.SEICKEL.COM](http://WWW.SEICKEL.COM)

[SALES@SEICKEL.COM](mailto:SALES@SEICKEL.COM)