

The Seickel Mini-Package

Found in high end hotels and clothing retailers nationwide

Seickel & Sons' mini-package is a brand new unit containing a 42" manual foot press, a Reimers 20kw electric steam generator and a Rema RP-1 vacuum. These three units together make a high quality package that is hard to beat with a price that makes it even better. Unlike other combination units, this one comes in individual pieces that can fit through doorways and into tight rooms. The whole package neatly fits into a six-foot by four-foot space. The Reimers boiler comes in a variety of 3 phase voltages.



Comes standard with:

- 42" utility press
- New Reimers 20kw 3phase Steam generator
- New Rema RP-1 Vacuum 110volt
- New table, pad and gridplate

Required utilities on Site:

- 3 phase electric for generator
- 110v control for generator and vacuum
- ½" water connection
- 2" vent to atmosphere

Additional options:

- Ace-hi all steam iron
- Iron stand
- Head and Buck insulator
- Blowdown flash tank
- Auto boiler flush

Refurbished packages are also available.
Other pressing machines may be substituted.

Visit our web site at <http://www.seickel.com>

Seickel & Sons Inc. is not affiliated with **Hoffman/New Yorker Inc.** and does not rely on **Hoffman/New Yorker Inc.** for its replacement parts.

SEICKEL & SONS INC.

MANUFACTURERS & REBUILDERS OF STEAM PRESSING EQUIPMENT

360 ELIZABETH AVE., NEWARK, NJ 07112 TEL.973-242-1948 FAX 973-733-4956

TOLL FREE IN U.S. 1-800-338-5044

WEB WWW.SEICKEL.COM

SALES@SEICKEL.COM

Mini-Package System Specifications

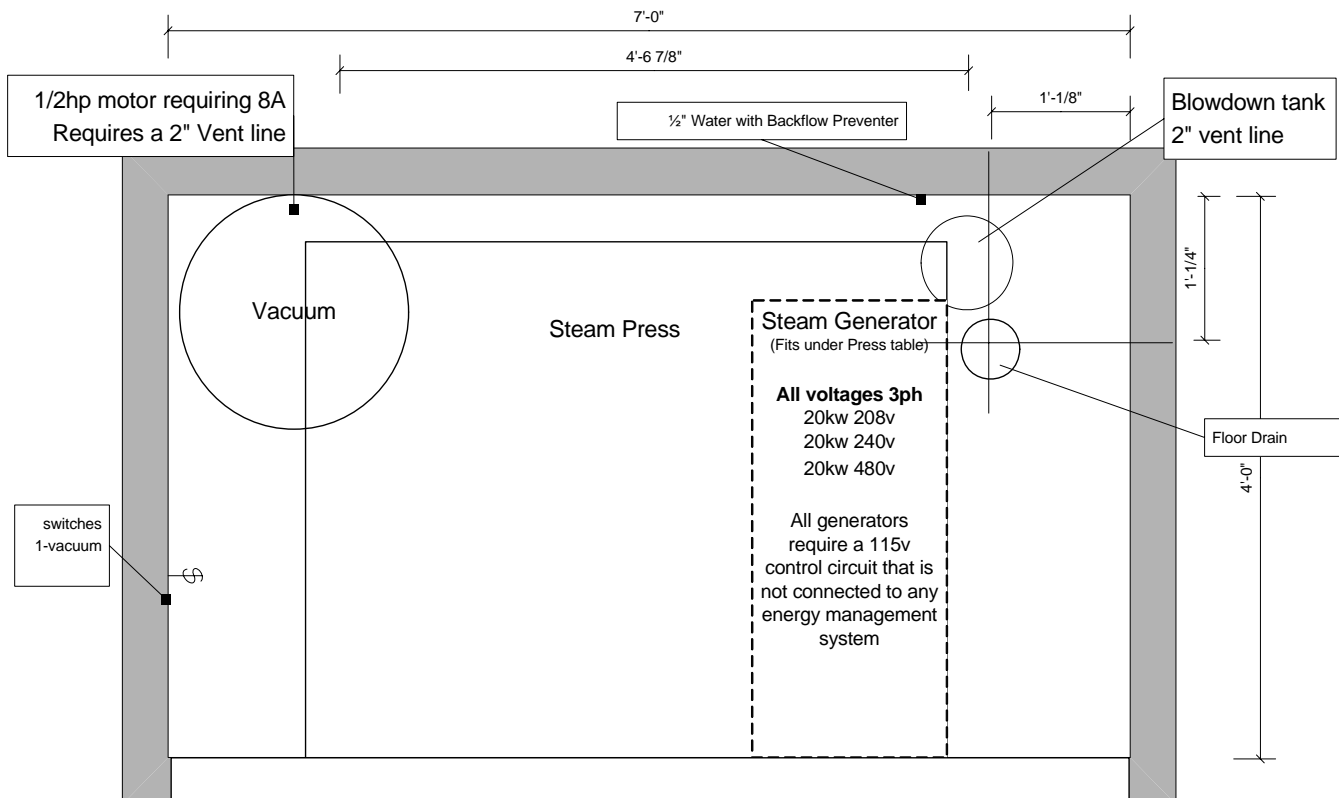
Steam Generator: Steam Generator is a Reimer 20KW electric Steam generator requiring 3 Phase Electrical current with a neutral Leg included for 110 Volt Control circuit on 208 Volts or 240 Volts. 480 Volts requires a separate 110v control circuit. On/Off Main Control Switch should be mounted 5' off floor on wall next to pressing machine. Generator requires a 1/2" cold water Feed with backflow preventer on same. Cold Water Feed should be on the back right side of Press in corner 24" off floor. Floor Drain should also be on the right side and about 8" off rear wall and 8" off sidewall. Some municipalities require the plumber and electrician to take out permits for the steam generator.

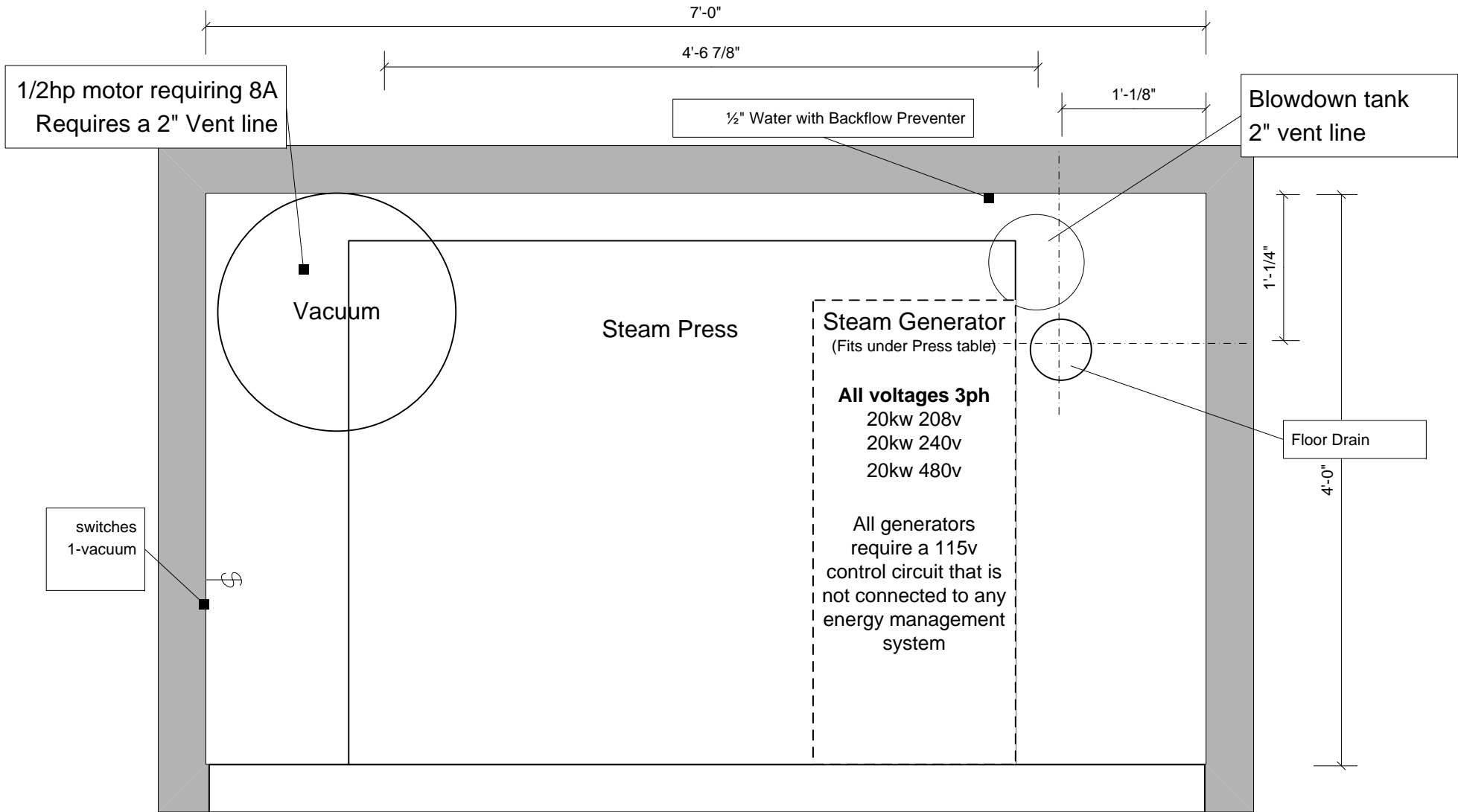
Press: Requires No electrical or plumbing connections outside of interconnections with boiler and vacuum handled by Seickel & Sons Inc. at Site. These units are pre-pipe for on site assembly. Presses now include Head Insulator to Reduce in room heat generated off of press.

Vacuum: Vacuum dryer is a 1/2 HP 110Volt Motor requiring an on/of switch on the left wall. This switch is turned on once a day and the motor runs constant during the press operation. **A 2" vent line to atmosphere is required.** Vacuum tank drain will come connected to the drain of the press.

Hand Iron: Iron is a 1500Watt 110Volt Iron with Solenoid. It requires a plug outlet for same. Outlet is usually on the right of press where iron is located and can be on the side or back wall 24"-36" off of the floor. Iron is piped directly to steam press and requires no other plumbing connections. Optional all steam iron may be substituted.

Space Requirements: The Entire Package Requires a Minimum of 84" from left to right and 48" front to back.





Seickel & Sons Inc 360 Elizabeth Ave Newark, NJ 07112 www.seickel.com sales@seickel.com	Seickel & Sons Inc.				
	Typical Mini Package Layout				
Tel. 973-242-1948	SIZE	FSCM NO	DWG NO Mini Package	REV 3	
Fax. 973-733-4956	SCALE	Not to scale	9/26/07	SHEET	1 OF 1