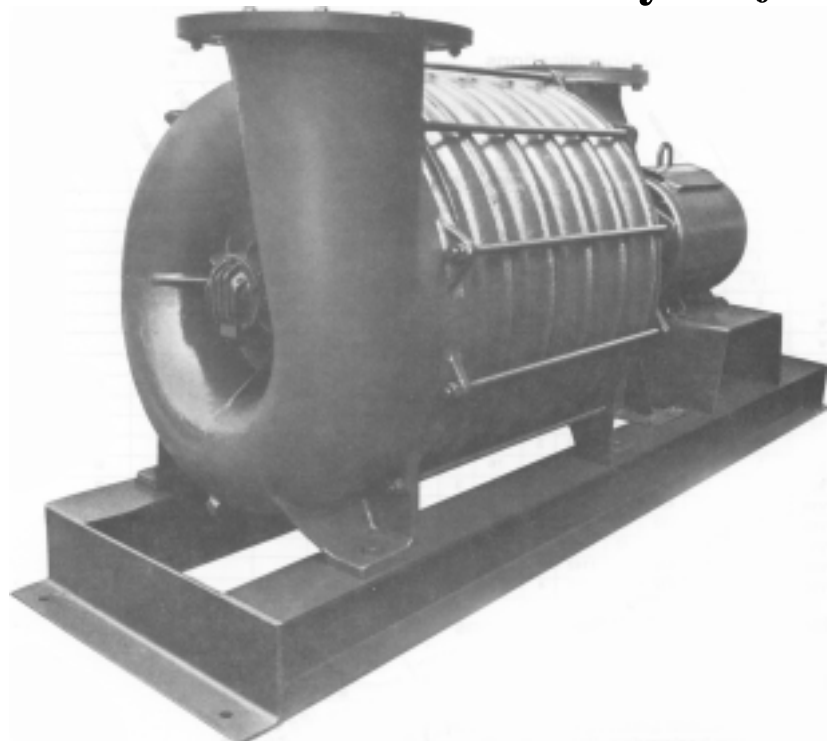


Powerful Horizontal Vacuum Dryers (from 2-200hp)



Horizontal Vacuum Unit Specifications

Model	Horsepower	Inlet Diameter		Outlet Diameter		Shipping Weight		Condensate Tanks			
		IN	MM	IN	MM	LB	KG	18" x 40" 457 MM x 1016 MM	24" x 60" 610 MM x 1524 MM	30" x 60" 762 MM x 1524 MM	36" x 72" 914 MM x 1829 MM
RT-32H	2	3	76	3	76	400	182	■			
RT-33H	3	3	76	3	76	500	227	■			
RT-35H	5	3	76	3	76	600	273	■			
RT-57H	7½	5	127	5	127	900	409		■		
RT-510H	10	5	127	5	127	1100	500		■		
RT-615H	15	6	152	5	127	1400	636		■	■	
RT-620H	20	6	152	5	127	1600	727		■	■	
RT-625H	25	6	152	5	127	1700	765		■	■	
RT-630H	30	6	152	5	127	1800	818		■	■	
RT-640H	40	6	152	6	152	2000	909			■	
RT-650H	50	6	152	6	152	2300	1048			■	■
RT-660H	60	8	203	6	152	3000	1364				■
RT-675H	75	8	203	6	152	3300	1500				■
RT-8100H	100	8	203	6	152	3900	1773				■
RT-12125H	125	12	305	12	305	4800	2182				■
RT-12150H	150	12	305	12	305	5400	2455				■
RT-12200H	200	12	305	12	305	6000	2728				■

Electrical Specifications:
 All 60 Hertz Units 230/480/60/3
 All 50 Hertz Units 220/380/50/3
 Note: Add 50 to Model Number for 50 Hertz units, e.g., Model RT-510H50 is the 50 Hertz version of RT-510H.

SEICKEL & SONS INC.

MANUFACTURERS & REBUILDERS OF STEAM PRESSING EQUIPMENT

360 ELIZABETH AVE., NEWARK, NJ 07112 TEL.973-242-1948 FAX 973-733-4956
 315 WEST 36TH ST., SUITE 504, NY, NY 10018 TEL.212-290-2120 FAX 212-290-2140
 TOLL FREE IN U.S. 1-800-338-5044

WEB WWW.SEICKEL.COM SALES@SEICKEL.COM