

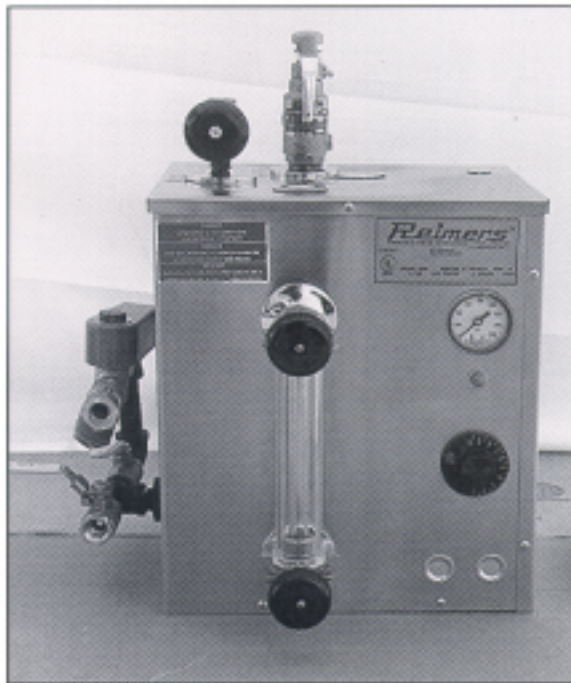


Model JR-Handfilled

- Electric: 1.5 KW/120 Volts
- Steam Output: 5 LBS (2.3 KG)/Hour* (on 120V)
- Pressure Range: 5 to 85 PSIG (.3 to 5.8 bar)
- Dimensions: 15" x 14" x 21" high (38 x 36 x 53 cm)
- Shipping Weight: 67 LBS (30 KG)
- Safety Valve Setting: 100 PSIG (6.8 bar)
- Gauge glass safety shield provided
- Cool plastic handles on all valves
- Handfilled through inlet funnel
- Manual blowdown valve
- Positive low water shut off
- Supports one (1) electric steam iron
- Thermostatically controlled
- Ships via U.P.S.
- Built in accordance with requirements of the ASME boiler and pressure vessel code
- Bears the National Board of Boiler & PV inspectors stamp
- U.L. listed (CSA/CRN for Canada)

Also Available

AR3-HAND 3 KW/120V
 AR4-HAND 3 KW/240V
 AR7-HAND 6 KW/240V



Model AR8-Automatic

- Electric: 8.0 KW/240 Volts
- Steam Output: 28 LBS (12.7 KG)/Hour* (on 240V)
- Pressure Range: 5 to 85 PSIG (.3 to 5.8 bar)
- Dimensions: 17" x 14" x 21" high (43 x 36 x 53 cm)
- Shipping Weight: 69 LBS (31 KG)
- Safety Valve Setting: 100 PSIG (6.8 bar)
- Automatic water level control
- Solenoid valve water feed
- Gauge glass safety shield provided
- Cool plastic handles on all valves
- Manual blowdown valve
- Positive low water shut off
- Supports four (4) electric steam irons
- Thermostatically controlled
- Ships via U.P.S.
- Built in accordance with requirements of the ASME boiler and pressure vessel code
- Bears the National Board of Boiler & PV inspectors stamp
- U.L. listed (CSA/CRN for Canada)

Also Available

JR-AUTO 1.5 KW/120V
 AR3-AUTO 3 KW/120V
 AR4-AUTO 3 KW/240V
 AR6-AUTO 6 KW/240V

SEICKEL & SONS INC.

MANUFACTURERS & REBUILDERS OF STEAM PRESSING EQUIPMENT

360 ELIZABETH AVE., NEWARK, NJ 07112 TEL. 973-242-1948 FAX 973-733-4956
 315 WEST 36TH ST., SUITE 504, NY, NY 10018 TEL. 212-290-2120 FAX 212-290-2140
 TOLL FREE IN U.S. 1-800-338-5044

WEB WWW.SEICKEL.COM

SALES@SEICKEL.COM