

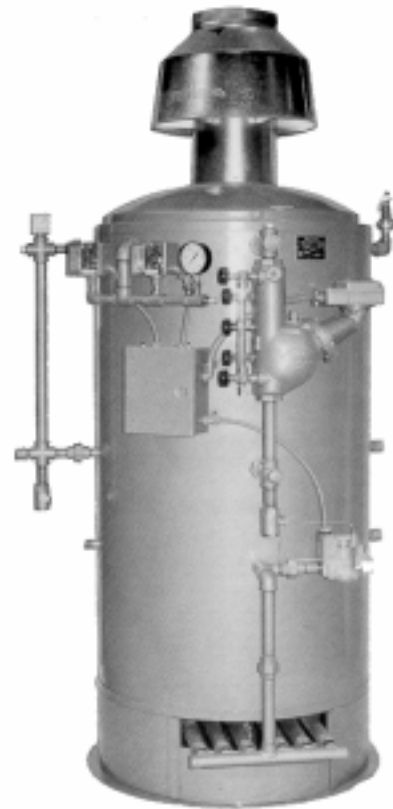
# LATTNER High Efficiency Gas Boilers

## Description

Durable ASME CODE vertical flueless steam boilers with atmospheric gas burners. Each boiler is completely automatic with pressure controls, gas controls, water level controls, and low water cut off. All joints and seams are welded and hydrostatically tested. Constructed of heavy duty  $\frac{1}{4}$ " or  $\frac{3}{8}$ " thick steel. High overall efficiency helps keep operating costs low. *All boilers completely assembled at factory — only the trim and controls are removed before shipping and can be quickly reassembled.*

## User Benefits

- **Safe, reliable steam.** Over 34,000 boilers installed since 1918. Trouble-free equipment with burners that produce 100% of rating. Sizes  $1\frac{1}{2}$  through 15 H.P. can be U.L. listed and labeled.
- **Easy, routine maintenance.** Simple engineered designs are exempt from many state and local regulations. And handhole openings allow for internal inspection and easy cleaning.
- **Durability is guaranteed.** All construction in accordance with ASME CODE. National Board Registered. Plus a reasonable one year warranty, backed by over 70 years of responsible customer service. Parts, when needed are usually shipped on same day ordered.
- **Tubeless design.** No expensive tubes or coils to plug up or burn out. Eliminates costly "down time".



## Simplified Installation

No engineering required on job. Installation can be made and top performance obtained by local heating service/suppliers.

Many months of research and testing developed the formula for the proper size of secondary air passages, combustion space, and exact number, size and length of heat conductors for high efficiency and excellent combustion.

## Stack Requirements

TUBELESS boilers are designed to operate without draft pull from a stack or chimney. Stack need only be high enough to carry away the products of combustion. If there are no surrounding obstructions or buildings that could cause a downdraft, stack need only extend four to six feet above the roof of even a one story building.

No motor driven blowers or suction fans required. Boilers can be provided with draft inducers if horizontal venting is required.

---

## SEICKEL & SONS INC.

MANUFACTURERS & REBUILDERS OF STEAM PRESSING EQUIPMENT

360 ELIZABETH AVE., NEWARK, NJ 07112 TEL. 973-242-1948 FAX 973-733-4956  
315 WEST 36<sup>TH</sup> ST., SUITE 504, NY, NY 10018 TEL. 212-290-2120 FAX 212-290-2140  
TOLL FREE IN U.S. 1-800-338-5044

WEB [WWW.SEICKEL.COM](http://WWW.SEICKEL.COM)

[SALES@SEICKEL.COM](mailto:SALES@SEICKEL.COM)