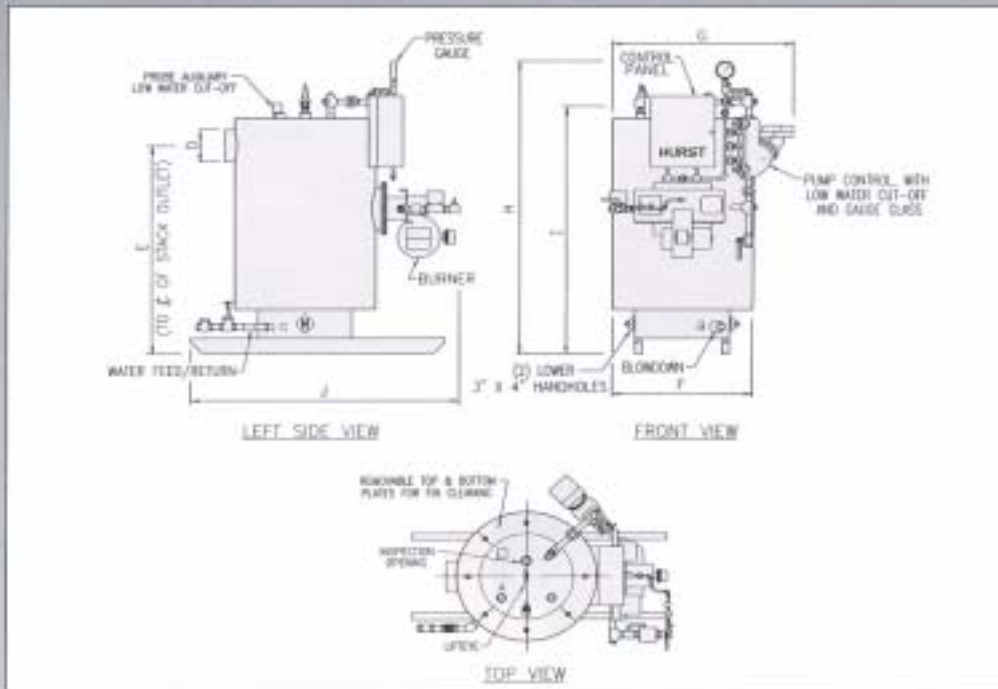


4VT CYCLONE SERIES



STANDARD STEAM TRIM

- Steam pressure gauge with syphon and test cock
- McDonnell & Miller 157 combination low water cut-off and pump control with water column blow down valve
- McDonnell & Miller probe auxiliary low water cut-off and relay
- Water column gauge set with drain valve
- ASME safety relief valve
- Operating and high-limit pressure controls
- Feed check and shut-off valves included on boilers up to and including 30 Hp
- Y-Type blowdown valve included on boilers up to and including 30 Hp
- Steam outlet valve included on boilers up to and including 30 Hp

GAS FIRED



OIL FIRED



GAS/ OIL FIRED

**6 TO 100 HP
FOUR-PASS
VERTICAL
TUBELESS
BOILERS**

**FOUR-PASS
CYCLOPOWER**

150# STEAM 4VT CYCLONE SERIES SPECIFICATIONS

BOILER HORSEPOWER		6	10	15	20	25	30	40	50	60	70	80	100
STEAM OUTPUT	FROM & AT 212°F	207	345	518	680	863	1035	1380	1725	2070	2415	2760	3450
	LBS./HR. / KG./HR.	94	157	235	313	382	470	626	783	940	1096	1252	1568
MBH OUTPUT		201	335	502	669.5	837	1004	1340	1674	2009	2344	2680	3348
INPUT REQUIRED		BTU x 1000											
		KCAL x 1000											
		252	420	630	840	1050	1260	1680	2100	2520	2940	3360	4184
		63.2	105.3	158	211	264	317	421	530	636	738	842	1060
A	STEAM OUTLET	1	1	1	1	1-1/4	1-1/2	2-1/2	2-1/2	2-1/2	2-1/2	2-1/2	3
	HIGH PRESSURE	2	2	2	2	3	3	4	4	4	4	4	6
	LOW PRESSURE												
B	BLOWDOWN	1	1	1	1	1	1-1/4	1-1/4	1-1/4	1-1/4	1-1/2	1-1/2	1-1/2
C	FEEDWATER	3/4	3/4	3/4	3/4	1	1	1	1	1	1	1	1 1/4
D	STACK DIAMETER	8	8	8	8	8	10	12	12	12	14	14	14
E	STACK HEIGHT	52	52	58	64	64	63	72.5	66	66	62.5	62.5	68.5
F	WIDTH WITHOUT TRIM	35.2	35.2	35.2	35.2	35.2	41	50	50	50	59	59	68
G	WIDTH WITH TRIM	45	45	45	45	45	50	55	55	55	64	64	72
H	OVERALL HEIGHT	80	80	85	92	92	91	96	110	110	108	108	114
I	HEIGHT WITHOUT TRIM	71	71	78	76	76	78	88	101	101	99	99	105
J	OVERALL LENGTH	73	73	73	77	77	76	92	92	92	95	95	100
WATER CAPACITY @NWL		GALLONS											
		52	52	58	58	58	58	79	150	172	172	207	207
WATER CAPACITY FLOODED		GALLONS											
		62	62	68	79	79	113	308	201	231	296	266	452
APPROXIMATE SHIPPING WEIGHT		LBS.											
		2275	2275	2450	2675	3075	3200	5800	6200	6200	7200	7600	8400

Available with design pressures to 300 PSIG. Low pressure steam or hot water models available. We assume no responsibility for errors in data. Certified dimensions, specifications and drawings are available on request.

Outlet connectors over 4" inch on low pressure models are 150# flanges. All other connections are NPT.

SEICKEL & SONS INC.

MANUFACTURERS & REBUILDERS OF STEAM PRESSING EQUIPMENT

360 ELIZABETH AVE., NEWARK, NJ 07112 TEL. 973-242-1948 FAX 973-733-4956
 315 WEST 36TH ST., SUITE 504, NY, NY 10018 TEL. 212-290-2120 FAX 212-290-2140
 TOLL FREE IN U.S. 1-800-338-5044

WEB WWW.SEICKEL.COM

SALES@SEICKEL.COM