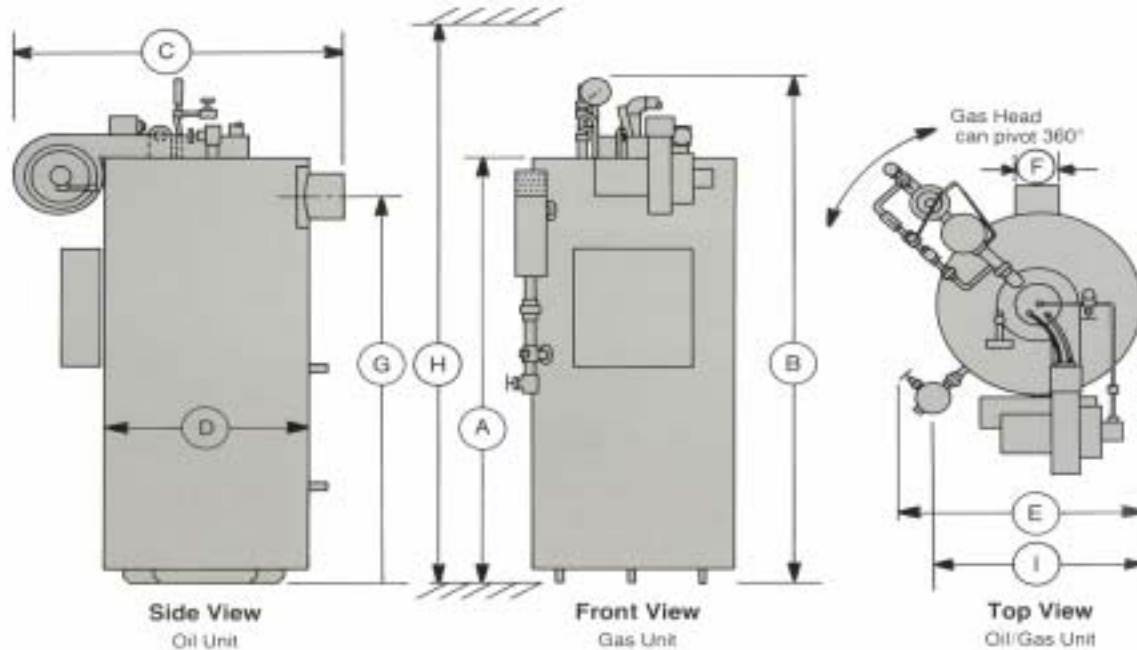


# Fulton Dimensions & Weights



## Dimensions and Weights

Models FB-F same as Models FB-A

		004	006	010	015	020	030	050	060	080	100	
<b>Standard Model FB-A</b>												
<b>EnergyPak Model FB-F</b>				010	015	020	030					
Unit Size	BHP	4	6	10	15	20	30	50	60	80	100	
<b>Heights and Widths</b>												
A	Boiler Height	IN	47	67	63	69	72	83	87	93	93	99
		MM	1174	1448	1600	1753	1829	2083	2210	2362	2362	2515
B	Boiler Height With Trim Gas and Oil Boilers Overall	IN	66	73	79	90	92	100	106	118	118	120
		MM	1675	1865	2020	2275	2335	2540	2745	3000	3000	3050
C	Overall Depth Stack to Burner Fan Housing	IN	43	45	46	47	59	58	78	78	93	99
		MM	1092	1143	1168	1194	1499	1727	1981	1981	2362	2515
D	Boiler Diameter	IN	26	26	28	30	39	46	55	55	67	75
		MM	660	660	710	760	990	1170	1400	1400	1702	1905
E	Overall Width With Water Column	IN	33	33	25	36	44	50	58	58	68	75
		MM	838	838	635	914	1117	1270	1473	1473	1727	1905
F	Flue Outlet Diameter	IN	6	6	6	8	10	12	12	12	14	14
		MM	152	152	152	203	254	305	305	305	356	356
G	To Center of Flue Outlet	IN	42	52	57	63	66	73	76	82	82	88
		MM	1070	1320	1450	1600	1675	1855	1930	2085	2085	2235
<b>Minimum Clearances</b>												
H	Ceiling Height Required for Trim and Burner Removal	IN	72	81	86	94	96	106	114	120	120	125
		MM	1829	2057	2164	2387	2438	2692	2895	3048	3048	3175
I	Opening Required for Boiler Installation With Water Column Removed	IN	26	26	28	30	39	46	55	55	67	75
		MM	660	660	710	760	990	1170	1400	1400	1702	1905
	Front of Boiler	IN	41	41	41	41	41	41	41	41	41	41
		MM	1041	1041	1041	1041	1041	1041	1041	1041	1041	1041
	Sides and Rear of Boiler	IN	18	18	18	18	18	18	18	18	18	18
		MM	457	457	457	457	457	457	457	457	457	457
<b>Weights</b>												
	Approximate Shipping Weight	LB	1400	1700	2000	2300	3400	4700	7200	7700	10500	11600
		KG	640	770	910	1045	1545	2140	3270	3500	4770	5270

Dimensions are approximate. We reserve the right to change dimensions.

## SEICKEL & SONS INC.

MANUFACTURERS & REBUILDERS OF STEAM PRESSING EQUIPMENT

360 ELIZABETH AVE., NEWARK, NJ 07112 TEL. 973-242-1948 FAX 973-733-4956  
 315 WEST 36<sup>TH</sup> ST., SUITE 504, NY, NY 10018 TEL. 212-290-2120 FAX 212-290-2140  
 TOLL FREE IN U.S. 1-800-338-5044

WEB [WWW.SEICKEL.COM](http://WWW.SEICKEL.COM)

[SALES@SEICKEL.COM](mailto:SALES@SEICKEL.COM)